



Jigsaw4u

25TH ANNIVERSARY
1997 - 2022

Annual Review 2022

Helping put the pieces back together



Foreword – Chair of Trustees

It has been a remarkable year for Jigsaw4u. We celebrated an extraordinary 25 years of supporting children, young people and families that are experiencing complex social and emotional difficulties. It is a significant achievement of countless people over many years to be celebrating such a noteworthy anniversary.

It was also a year in which we supported 7,111 individual children, young people and their families including 12,801 one to one sessions with 10,046 service users attending one of 134 individual positive activities.

The scale, scope and complexity of the services required from Jigsaw4u has grown over each of Jigsaw4u's 25-years. Our Pre and Post Bereavement Service has been operational since 1997 and we have added further services as needs and expertise has evolved. This year demand for a number of our services has increased for a range of reasons including the significant and numerous ways in which Covid-19 has impacted young people, the impact of the changing geopolitical

environment impacting a number of service users and the general increase of mental health challenges for our children and young people.

To address some of these challenges we have added additional services throughout the year to meet these new demands. Support is now provided through services that include Advocacy and Independent Visiting; Home-School Links; Missing Young People; Criminal Exploitation; Helping Hands; Adoption Play Therapy; Prisoners' Families and Positive Activities.

Significantly in this coming year we are pleased to be able to extend the coverage of some of our services into our neighbouring Boroughs of Kingston, Richmond and Wandsworth.

The work undertaken by the exceptional staff team and the 121 volunteers meant that Jigsaw4u was awarded the London Youth Silver Quality Mark accreditation awarded to charities across the UK.

We have also continued to receive much needed financial and practical support from individuals, local businesses and community groups throughout the year. Jigsaw4u simply would not have survived into its 25th year without this support. We remain extremely grateful for the continued passion and generosity.

It has been lovely this year to hear the stories and meet some of the people who have benefitted from Jigsaw4u's services over the 25-years that Jigsaw4u has been supporting young people and to hear how the support provided has made such a difference both at the time and now. It was also lovely to see one of our current service users do the coin toss so amazingly confidently at the Wimbledon Ladies Final this year.

We know the coming years will continue to see demand for Jigsaw4u services grow and we are pleased to be in position after 25-years to continue to provide the support that has such an impact on those that use our services.



Mary Pragnell

Mary Pragnell
Chair of Trustees



Wimbledon Ladies Final 2022: Coin Tossed by one of our young people



25th Anniversary Event at St. Martin-in-the-Fields, Trafalgar Square



Apple Technology Day



School-based Play Therapy session



Littlehampton Trip 2022



Brighton Trip 2022



Testimonials

"Your Home School Links support in school with our children and families has been fantastic! The children are so excited and look forward to your sessions, feedback has been so positive! Your transition group has been a life saver!"

 **Gemma Sidaway, DSL & Family Support Leader, Cranmer Primary School**

"I couldn't recommend this course enough. It has changed everything for the better. Our Jigsaw4u worker is so attentive, understanding and knowledgeable. She has been a real asset to our family and we will forever be grateful!"

 **Parent receiving Child-Parent Relationship Training**

"Young people have reported trusting the Jigsaw4u workers, building up relationships over time. The workers have pushed for stronger responses to address the needs of children who are going missing and make sure their voice is heard – they have been an integral part of the work to seek to reduce the need for children to go missing."

 **Suzu Mullally, Specialist Safeguarding Lead, London Borough of Sutton**

"Our child is definitely more able to open up about feelings and has a much better understanding of her emotions. She is now able to identify when she is struggling emotionally (sad, frustrated, panic etc) and is able to find her own calming techniques.

Her self-esteem has really improved and she seems very confident. She doesn't mind putting herself in situations where she may 'fail' and is keen to try things now.

Our daughter's confidence has grown so much and we have had many comments from people outside of the home too who have noticed positive changes.

Home-life with our child has really improved and is much more relaxed and enjoyable for us all."

 **Parent of child who received Adoption Play Therapy**

"I have done a lot of courses over the years and the delivery of the courses were very much the same across the board. I then came across 'Who's In Charge?'

I was able to come away from the course with lots of positive changes in my house, things that I really thought my child would try to defy me on, but the subtle changes, body language, chosen words and consistency made those differences that we have been longing for.

I am thankful to Jigsaw4u for their continued support, advice and compassion not just throughout the course but prior to starting and post meetings to check-in individually to offer more guidance or to just sit and listen to us.

It has been invaluable to me and my family."

 **Parent attending Who's In Charge?**

"My daughter started showing signs of anxiety when she was in Reception. Gradually over the next couple of years it got worse and she struggled with getting into school.

Jigsaw4u never judged us and always offered invaluable advice. They have been crucial in not only helping my daughter, but also by being there for me as a parent.

Jigsaw4u has gone above and beyond in supporting our family."

 **Parent of Home School Links Child**

"They have been invaluable when my children have had to face living with terminally ill parents or the heartache caused when a parent takes their own life.

The staff are so experienced and extremely caring, and the support for the children, their families and the school is beyond measure.

I would find it difficult to deal with these situations without their advice and practical help."

 **Ro Maybury, Headteacher, Abbotsbury Primary School**





Chief Executive Officer's Report

It is an absolute honour to present Jigsaw4u's 2022 Annual Review on our 25th anniversary year. Reaching 25-years is a huge achievement for everyone involved with Jigsaw4u, past and present, which we are very proud of.

As the current CEO, and having worked directly with both of my predecessors, I want to tell you what an honour and responsibility working or volunteering for Jigsaw4u is for our current team. There have been times in the charity's history where we have battled significant financial difficulty, and were faced with a very real threat of closure. Everyone involved at the time was determined that Jigsaw4u continued to exist and that the children, young people and families we support continued to have somewhere to go for help. To achieve this, several former staff and trustees made substantial personal contributions, and with this in mind our current team are determined to continue the legacy of Jigsaw4u.

The children, young people and families we support are at the centre of every decision the charity makes, particularly so when we discussed how we should mark our 25th anniversary. Our minds cast back to the first young people who accessed Jigsaw4u all those years ago in 1997, where they could be now, and how the support helped them. This led us to the concept of a 'Then and Now' video to tell

this story, and we were able to track down six amazing young adults to participate. What we expected to be a promotional film, turned into a 30 minute documentary because of the incredible footage they provided! We have trimmed this in to a 12 minute mini-documentary, and please head over to YouTube to view it if you have not already. I thank the interviewees for their bravery, then and now, to share their stories to inspire young people currently in similar situations and highlight why Jigsaw4u continues to be needed.

Turning 25 provided us with a great opportunity to respond to service user feedback on our logo, and we collaborated with our children, young people and families to design and launch our new logo. We also celebrated 25-years by releasing Our Values, which you can read about on page 6, and by presenting Special Achievement Awards to staff members Chris O'Leary and Lisa Kennard, who have been with Jigsaw4u since the beginning.

2021 – 2022 was another record-breaking year for Jigsaw4u, please head over to page 9 for further details. Beyond our core services, the team have really focused on adding value through positive activities and community events – we saw this as essential in helping our communities rebuild following the pandemic. We were very proud to be awarded our London

Youth Silver accreditation, and work is underway as we progress towards Gold. All this was achieved through a team of 32 staff and 121 volunteers (including our 8 trustees), and I would like to recognise the Jigsaw4u team, past and present, and thank them for their dedication, passion and professionalism. Without them none of this would be possible. Early reporting was patchy, but we can confidently tell you that Jigsaw4u has supported over 50,000 individuals in our 25 years, and in that time the team have provided over half a million support sessions.

Jigsaw4u benefit from partnerships with local authorities, schools, statutory services, charities and businesses who share our vision for South West London, and the people living and growing up here. Additionally, we rely heavily on fundraising and donations. This is a tough time across the world for reasons we are all aware of, and there are many good causes to support. I hope this Annual Review will help share why Jigsaw4u continues to be such an important cause, and that we continue to need your support. I want to highlight that Jigsaw4u spend over 75% of our income directly on the delivery of our services to support children, young people and families in South West London. This will remain our approach moving forward to achieve our vision for next 25 years – for every individual who needs our support to be able to access Jigsaw4u.

Thank you to the hundreds of supporters who have enabled us to provide the services which have been identified for us, and the brave and wonderful children, young people and families who access Jigsaw4u and continue to inspire us.



Stephen Loizou

Stephen Loizou
Chief Executive Officer

SUPPORTED
50,000+
INDIVIDUALS SINCE 1997



PROVIDED
500,000+
ONE-TO-ONE SESSIONS SINCE 1997





Our Values

Jigsaw4u are often commended on the variety and quality of our services, and asked how we help children, young people and families achieve change. People are often surprised that our offer includes support for everyone from infants to adults, one-off interventions to therapy lasting over 1-year, and events as well as individual and family support. In response, our team looked at themes which are consistent across our services and feedback we have received on what makes Jigsaw4u special. 2022 saw Jigsaw4u launch 'Our Values' which are based on these themes and direct input from our staff, volunteers, children, young people and families.

We are Collaborative



Jigsaw4u work together with our local communities to identify needs and collaborate to enhance outcomes for children, young people and families.

We are Hopeful



Jigsaw4u support children, young people and families to overcome their past and feel more hopeful about the future. We build self-esteem, confidence and empower individuals to reach their full potential.

We are Real



Jigsaw4u listen and adapt to individual needs and identify unique, innovative approaches to individual challenges. We know you are a real person, and will make sure you are heard by real people.

We are Authentic



Jigsaw4u do not make promises we cannot keep. Our team is motivated, genuine and really do care. We are very passionate and will help you as much as possible.

We are Holistic



Jigsaw4u are the connection between our service users, families and other professionals. We are present, available, flexible, adaptable and we focus on your needs.

We are Creative



Jigsaw4u are passionate about our work and we continuously improve and evolve through creative thinking and practice. We offer safe, empathetic and non-judgemental support for complex social and emotional difficulties.

We are Inclusive



Jigsaw4u pride ourselves on our integrity and we are open to all, regardless of any community, demographic or group you identify with. We are independent and create individual care plans for everyone we support.

We are Experienced



Jigsaw4u was established in 1997 and we are valued for our professional support. We work in partnership with and are trusted by children, young people, families, carers, education settings, statutory and voluntary organisations.



Our Services

Jigsaw4u's flagship Bereavement Service has been operational since 1997, and since then we have evolved to add several other core services as our expertise has developed, which are predominantly based in the London Boroughs of Merton and Sutton, however we offer several services in neighbouring boroughs such as Wandsworth, Kingston, Richmond and Croydon, as well as north east Surrey.



Pre and Post Bereavement Support

We support children, young people and families affected by cancer, life limiting illness or bereavement by offering: advice around understanding the illness and medical process; support around emotional and practical needs; and, opportunities to share experiences and celebrate the life of the person who has died.



Home School Links

We provide primary and secondary schools with an on-site Specialist Support Practitioner to work with their students and parents/carers on a one-to-one, group and drop-in basis. Support is bespoke and provides interventions to help students overcome social, emotional and behavioural barriers affecting their learning and development.



Missing Young People and Child Exploitation

We provide independent return home interviews for all young people who have been reported missing from home or care both locally and out of borough if commissioned. We offer one-to-one support for young people to address issues such as peer pressure, child sexual exploitation, online safety or family conflict.



Advocacy and Independent Visiting

We support children in care and children who are working with social workers to speak out when professionals are making decisions about them, ensuring their voice is heard and is listened to. We also support volunteers who befriend young people in care, developing trusting relationships with young people designed to be long term and fun.



Young Victims of Crime

Headlight provides tailored victim support interventions for young people who have experienced crimes including GBH/ABH, sexual assault and robbery, helping them overcome emotional trauma and increase their sense of safety. Additionally, we aim to break the victim-becomes-perpetrator cycle and reduce the vulnerability of young people with SEN.



Helping Hands

We support women and families who have experienced domestic violence and/or abuse by training volunteers to befriend and support them. Our volunteers offer a range of emotional and practical services to help them overcome the effects of abuse and to empower them to make positive choices regarding their future.



Parent Child Game

Through our Sutton Alliance partnership, we provide a behavioural based parenting programme which involves both the parents and the child. We directly coach parents on how to interact differently with their child in order to decrease negative behaviours and increase cooperative behaviours.



Suicide Support

The death of a parent, sibling or close friend through suicide can be one of life's most traumatic events. We offer support to families and professionals through: debrief support; individual support; family sessions; group support; telephone advice; and, emergency consultation for schools.



Who's In Charge?

We provide regular 9-week parenting groups for parents/carers whose children are perpetrating domestic abuse and/or violence to re-establish boundaries and reclaim control of their families. Groups are specifically tailored for parents/carers of 8 to 12 year-old children and 13 to 17 year-old young people.



Adoption Play Therapy

We have developed existing local authority partnerships to provide specialist, long-term play therapy for adopted children. Our MSc qualified and BAPT registered Play Therapists utilise DDP, Theraplay and family sessions to help children overcome development trauma, attachment disorder and other adoption related issues.



Tenancy Support Service

We work in partnership with statutory services to provide care leavers with intensive support, focussed around housing and independence. Our staff help care leavers find and maintain appropriate accommodation and make successful transitions to independent living.



Prisoners' Families

The Glasshouse Service provides holistic therapeutic support for children who have a parent or older sibling in prison. We help through a programme of one-to-one support for the young person, family work, group work and developing support networks to increase understanding of this complex situation.



Therapeutic Life Story Work

Jigsaw4u can be commissioned on an individual basis to provide TLSW This is a specialist therapy/social work intervention which helps adopted children/children in care (and their parents/carers) understand and accept their personal history through addressing developmental trauma and attachment insecurity.



Positive Activities

We provide a series of free one-off and regular events throughout the academic year and school holidays for our service users to benefit from, including: sports coaching, computing, art, drama, parties, seaside trips, theme park visits, pantomimes, football matches, yoga for mums, and exhibitions.



New Services coming in 2022 – 2023

From August 2022, Jigsaw4u are excited to be launching four new services. These have been designed and developed in collaboration with a range of stakeholders to meet the ever-changing needs of our South West London communities.



Ukraine Response Support

Jigsaw4u will be working with newly-settled Ukrainian refugees and their children to help them feel welcomed and supported in the UK. Our service will help: introduce host families, understand their new home/area, develop local networks, improve language skills, access education, and overcome trauma.



Piece of Mind

Depression and anxiety reported by young people is at an all-time high. Jigsaw4u will be providing 11 to 24 year-olds in South West London with individual care plans, structured counselling/therapy and positive activities to help overcome these difficulties and enjoy life to the full.



EBSAnd Flows

Emotional-Based School Avoidance is a growing challenge for many children and young people, particularly post-pandemic. Jigsaw4u will be working on an outreach basis to support children, young people and families overcome barriers associated with school avoidance and re-engage with education.



Social Prescribing

Social prescribing has been successfully implemented for adults in South West London to help individuals and communities improve their health and well-being. Jigsaw4u will be providing this service to children, young people and families through our range of local, accessible and non-clinical services.



Our Timeline

1997

- Jigsaw4u opens, based in the Chaucer Centre in Morden
- Bereavement Service launched



2010

- Pre-Bereavement Service Launched



2011

- Experience significant financial crisis which could have resulted in the Charity closing, we survive through efforts of staff, trustees and supporters



1999

- Moves into current Mill Green Road HQ



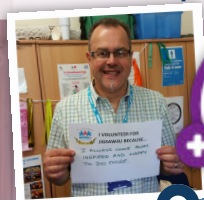
2000

- Home School Links Service launched



2007

- Received Queen's Award for Voluntary Service



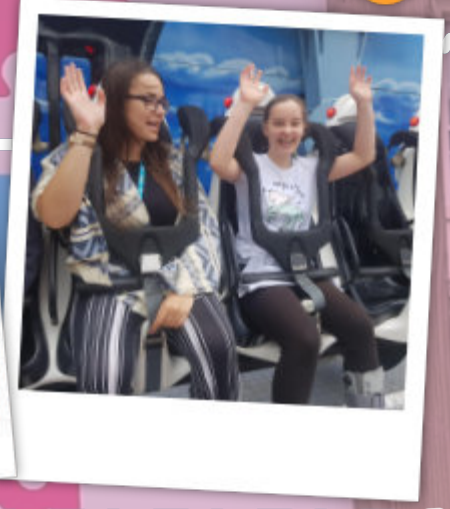
2004

- Helping Hands Service launched



2005

- Advocacy and Independent Visiting Service launched



2013

- First Seaside Trip
- Partnership with Crystal Palace Supporters Children's Charity formed



2014

Pilotlight 360

- Completed Pilotlight 360 Programme
- Received PQASSO Quality Mark
- Received Experts in Volunteering Chartermark
- Positive Activities Service launched



EXPERTS in VOLUNTEERING



2015

- Young Victims of Crime Service launched
- Child Exploitation Service launched
- First Easter Party
- Who's In Charge? Service launched

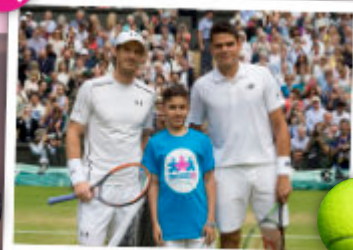


Easter Party



2016

- First Football4u Tournament
- Partnership with the Children's Trust, Tadworth, formed
- Young person tosses the coin at Wimbledon AELTC Mens' Final
- Suicide Support Service launched



Football4u



2017

- First Fundraising Ball held
- Sutton Alliance Partnership formed
- Parent Child Game launched



NHS South West London and St George's Mental Health NHS Trust

2018

- 20th Anniversary event at the House of Lords
- Received Clothworker's Good Governance Award



2019

- Tenancy Support Service launched
- Prisoners' Families Service launched
- Adoption Play Therapy Service launched
- Therapeutic Life Story Work Service launched
- Sutton Transformation Partnership formed
- Lord Iain McNicol of West Kilbride becomes Patron
- Therapy Cabin installed in Back Garden
- First care leavers Christmas Party

London Youth Quality Mark 2020-23



2020

- Received London Youth Bronze Quality Mark
- Reading Buddies Service launched

London Youth Quality Mark 2022-25



Our Patron Lord Iain McNicol of West Kilbride



2022

- Received London Youth Silver Quality Mark
- Celebrates 25th Anniversary
- Held 25th Anniversary Event at St. Martin-in-the-Fields, Trafalgar Square
- Young person tosses the coin at Wimbledon AELTC Ladies' Final



The Year in Numbers

2021 to 2022 was a record-breaking year for Jigsaw4u across the board in terms of numbers.

Demand for our services reassures us that we are providing support in relevant areas and that our approach works. We are proud that, despite demand, our services respond fast, operate minimal waiting lists and maintain contact between referral and support. Statutory and voluntary organisations, as well as parents and our communities, have

benefited from our expertise when in need of advice – displayed by our consultation figures.

Our volunteers have logged a record number of hours, supporting us with service delivery, administration, maintenance, fundraising and more. In this regard, Jigsaw4u benefits extensively from the 8 volunteers who comprise our Board of Trustees. Each has a specific professional back-ground which they use to ensure good governance across

the organisation and we are grateful for the many hours they volunteer.

Positive Activities is a self-funded service which we are very passionate about. Launched, designed and adapted around service user and our Young Peoples Panel's feedback. Our 25th anniversary year saw more activities than ever, inclusive of: Brighton and Littlehampton seaside trips, Live @ 25 community pop-up events, visits to Historic Royal Palaces, Eid and Jubilee celebrations, an ASD/SEN

Dance Party, theatre performances, magic shows, SEN sports, Magical Quests drama groups, art days and family days out.

Additionally, our team partnered with London Borough of Sutton to ensure our vital Christmas Day Dinner for Care Leavers proceeded as planned during pandemic restrictions.



SUPPORTED

7,111

INDIVIDUALS



PROVIDED

12,801

ONE-TO-ONE SESSIONS



RESPONDED TO

3,087

ENQUIRIES AND CONSULTATIONS



ATTENDED

2,494

PROFESSIONALS MEETINGS



ALSO

121

VOLUNTEERS USED



5,515

HOURS CONTRIBUTED BY VOLUNTEERS



134

FREE POSITIVE ACTIVITIES PROVIDED FOR OUR SERVICE-USERS



10,046

SERVICE-USERS ATTENDED FREE POSITIVE ACTIVITIES



4

NEW SERVICES COMING IN 2022 – 2023



Our 25th Anniversary Celebrations

We wanted to commemorate our 25-year milestone by showing just how far the Charity has come since 1997.

Initially, we developed a new logo and brand identity, which was a collaborative process between our local community, staff, volunteers, funders and partners. A vote selected the final logo, which is proudly displayed in this review.

Jigsaw4u produced three promotional videos this year. One of which was a mini-documentary entitled: 'Then and Now'.

Six former bereavement service-users,

who lost family members when they were children, were interviewed remotely, with calls going out as far as the Gold Coast and Toronto.

It was very moving to see how our flagship service had such a positive impact as each interviewee went on to study at university and found further success in their careers. We are grateful for their contribution - it is not easy to speak about or to revisit such sensitive subjects.

We also produced a 4-minute video that featured the voices of current service users, created to be an introduction

to Jigsaw4u in 2022.

Lastly, we were delighted to host our 25th Anniversary Event at St. Martin-in-the-Fields, Trafalgar Square. It was a pleasure to speak with our supporters, new and old, savour the atmosphere and look forward to the future of Jigsaw4u.

We are thankful to Toy Soldier Films who kindly volunteered their time to produce a video that captured the night perfectly.

Please visit our YouTube channel, by searching 'Jigsaw4u Sout West London,' to watch, or re-watch each of these videos.

In July 2022, I was able to celebrate my birthday and being welcomed into a full-time role for a brilliant charity. I look forward to growing in this role and to be an integral part of Jigsaw4u's growth.



Macklin Doherty

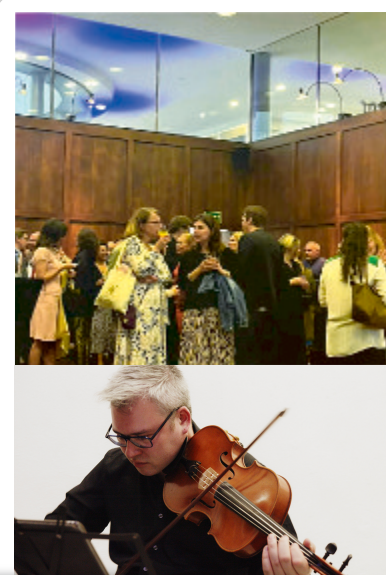
Macklin Doherty
Business Development and Communications Manager



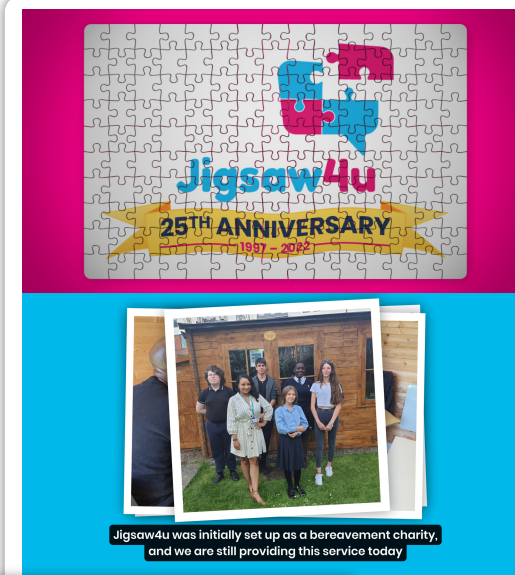
Then and Now (Bereavement Mini-Documentary)



25th Anniversary Event



25 Years of Jigsaw4u Video



Jigsaw4u was initially set up as a bereavement charity, and we are still providing this service today



Our Patron and Ambassadors

Jigsaw4u's Patron, Lord Iain McNicol of West Kilbride, was born in Scotland but has been a Merton resident for over 25 years. Before his peerage, Lord McNicol was the National Political Officer of a large trade union and spent seven years as the most senior employee and General Secretary of a major British political party. Lord McNicol is married and has two children who both attended local schools. He is a black-belt in karate and enjoys yoga in his spare time.

"I am deeply impressed by the powerful work Jigsaw4u carry out for those experiencing challenging times. Seeing their work close up and being able to do the little I can to support them makes me immensely proud."



**Patron
Lord Iain McNicol
of West Kilbride**

"It is a great honour and a privilege for somebody like myself to support those that need a little bit of support and guidance."



**Disability Ambassador
Richard Whitehead MBE**

Richard Whitehead MBE, is an athlete who runs with prosthetic legs following a double through-knee congenital amputation. Richard won gold medals at the Paralympic Games in London 2012 and Rio 2016. He is the 200m T42 world record holder, and previously held the marathon world record for athletes with lower-limb amputations.



**Mental Health Ambassador
Nathaniel Wood**

"I'm really enjoying working with Jigsaw4u, a great charity doing great things in the community. If I can help put a smile on these kid's faces and steer them in the right direction then I will be a happy man."

Nathaniel Wood, lives in Merton and went to school in Sutton. Nathaniel is a professional mixed martial artist and Cage Warriors bantamweight champion. Nathaniel currently competes in the UFC (the top organisation in the world).

"Every young person deserves to be listened to and supported. If I can encourage and inspire young people who have experienced being in the care system, or encountered any difficulties with their own family background then it would be a privilege."

Emma Norry, is an author and screenwriter. Emma was shortlisted for the Diverse Book Awards (Children's), has written for Penguin's Extraordinary Lives series and has the first in a two book children's series out with Bloomsbury next Summer. Emma herself grew up in the care system.



**Children and Young People In or
Leaving Care Ambassador
Emma Norry**

"I inspire people to be creative and stand as a positive influence to those that need a push in life. Working with Jigsaw4u gives me the chance to build a strong platform with young people, organising urban art workshops, visits to art museums and galleries, engaging with their likes and talents."



**Community Art Ambassador
Nathan Bowen**

Nathan Bowen is a street artist from South London. Nathan is internationally known and starred in the BBC television show 'The Apprentice'. Nathan is passionate about sharing his love for art, reminding people that there is no limit to imagination, and to be creative and free.



£ Income and Expenditure

I am very proud to have been involved with Jigsaw4u over the last eight years. As my time as a trustee draws to an end I have been reflecting on the changes I have witnessed in how the charity is run and most importantly - what it delivers.

I joined as a trustee in October 2014, touched by the bereavement support work the charity provides and which I wished had been available to myself and my sister when we lost a parent when we were children. Jigsaw4u had long been on an upward path, so ably led by Pam Byfield and Chris Roe, and I was lucky enough to join at a time

when all that effort was really beginning to bear fruit.

I have worked with charities in one way or another for much of my adult life, but what impressed me most was how professionally the charity was run. At the time, Jigsaw4u had a third less income than it does now, but the staff, trustees and volunteers gave - and still give 100% to making sure that the organisation is a model of how a small charity should be run. I have worked with much bigger charities that do not have half the drive, commitment or sense of responsibility to the factors that make a charity

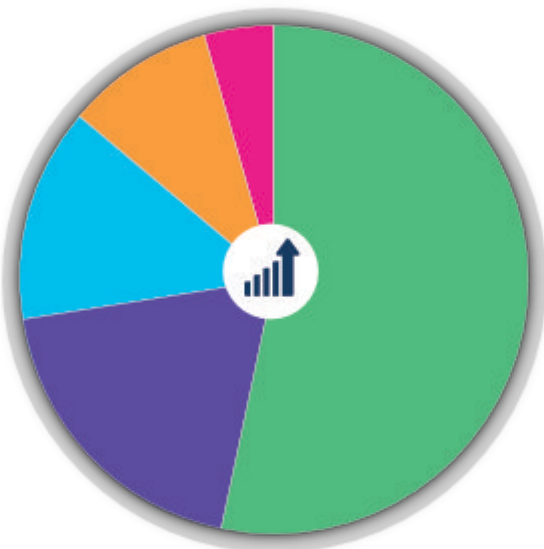
work behind the scenes: good governance, managing risks, and above all focusing on our service users.

That embedded culture is a testament to the effort of previous trustees and staff and has made my time as a trustee far less stressful than I worried it might be when I sat down for my first trustee meeting back in 2014.

It was also that commitment that saw Jigsaw4u respond so brilliantly to the pandemic when everyday life was turned upside down. It also highlighted the big change that has marked my time as a trustee: the

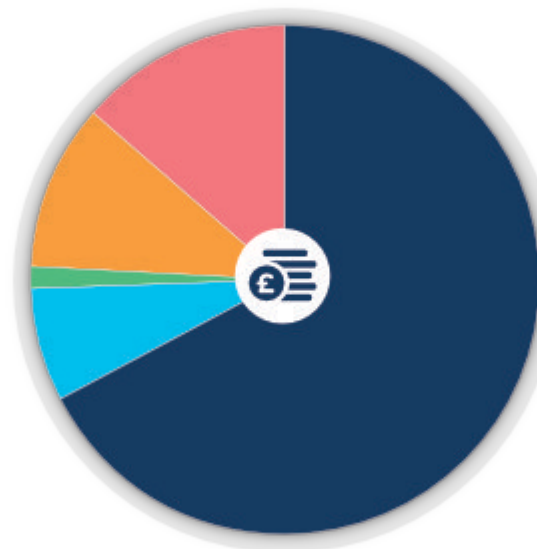
growth in the charity's income as funders, donors and grant-makers recognise the measurable difference Jigsaw4u makes to people's lives.

As Jigsaw4u moves into the next quarter of a century, the foundations are solid to continue delivering for the young people at the core of our work. Because, sadly, the key lesson from working with Jigsaw4u for nearly a decade is that demand for the charity's support is unlikely ever to be satisfied. Which is why the work must go on.



Income

- Companies & Trusts
- Local Authorities
- Donations & Gift Aid
- Charity Contracts
- Other



Expenditure

- Direct Service Delivery
- Fundraising
- Audit & Accounting
- Rent
- Other Support costs






Thank you!



Thank you to the following people and organisations for supporting Jigsaw4u over the past year: Chris Roe; Vince Gray; Sally Hull; Ruth Collins; Christine Stracey; Tracey McIntyre; John Pragnell; Kate Cashman; Lindsey Russell; Daniel Foster; Cynthia Quainoo; David Blurton; Eloise Stonebridge; Janique Bullen; Michelle Mullarkey; Mitchell O'Leary; Nicholas O'Leary; Patrick O'Leary; Lewis Palmer; Nathaniel Wood; Richard Whitehead MBE; Emma Norry; Wayne Woodward; Watson & Sole; ITC; Love Water; Givers Gain; Gibsons Games; Close Brothers Wimbledon; Wimbledon Midwifery & Benevolent Society; Mitcham Golf Club; Cognus; Lindsay Rice & Sainsbury's Wallington; AKO Foundation; Theo The Magician; Dons Local Action Group; Community Champions Sutton; Merton Giving; Hygiene Bank Sutton; KPS Wimbledon; Crystal Palace Supporters Children's Charity; Lady Wimbledon; Cakes For Kids Sutton; Co-op Funeral Care Rose Hill; Carshalton & Wallington WI; Project Linus; Wallington FC; Hilary Barnard; National Trust Morden Hall Park; Halifax Sutton; Waitrose Raynes Park; Howard Baines; Sindia Malhotra; Frank Finn; Aneta Kunka; Ahmadiyya Muslim Women's Auxiliary South Wimbledon; The Surrey Freemasons' Provincial Charity Fund; Greenshaw High School; Toy Soldier Films; Mr and Mrs Tulkiens; **and, to everybody else who has supported us.**

Thank you for the following people and organisations for supporting Jigsaw4u over the past 25-years: Wimbledon Foundation and AELTC; Macmillan Cancer Support; Global's Make Some Noise; Young Londoners Fund (GLA); MOPAC; St James' Place Charitable Foundation; Comic Relief; The Jack Petchey Foundation; London Sport; Magical Quests; The Woolf Foundation; Invesco Cares Foundation; The Hedley Foundation; Pam Byfield; Anna Lubelska; Yvonne Giles; Ann Waller; John Merriman, family & friends; Angela Brocklesby, family & friends; Right Said Fred; Jason Euell; Sally Morgan; Lord Brooke of Alverthorpe; Sir Keith Ajegbo; Southside House; BHP Billiton; John Simes; Alex Miller; D Parker & Son Ltd; Mirabaud; Mimecast; o3e; Robert Watson; AbbVie; Ticketer; Siobhan Ritson; Kathleen & Andy Zonfrillo; Beth & Janet Etches; Julie Neville, Amelia Neville & Frankie Willis; Living Water Parish Church; Sarah Grond Foundation; Art for Everyone; RE:SOLE; Genevive Stephenson; Attiya Tahir; Ruby & Sean Cooper; Zana Blair; Wallington Cycles; Rosie Wilkins; New Wimbledon Theatre; Cognus; Room to Reward; Celeb FC; Capgemini; Alex Marsh; Eligo recruitment; Sam Badby & Connor Barton; Peter Webb; Reed Wimbledon; ASDA Sutton; **and, to everybody else who has supported us.**

-  If you would like more information or to fundraise, donate or volunteer, **please contact us on info@jigsaw4u.org.uk.**
-  If you would like to help raise awareness of our work, **please follow us on Instagram, Twitter or Facebook @jigsaw4u.**
-  **All time, money and support will go directly towards children, young people and families in South West London.**

£ Funders

Partners

Schools



25 years of helping children, young people and families put the pieces back together.

www.jigsaw4u.org.uk

40 Mill Green Road, Mitcham, CR4 4HY



/Jigsaw4u



@jigsaw4u



@Jigsaw4u



Q Jigsaw4u



Jigsaw4u
SW London



Charity Number: 1109167